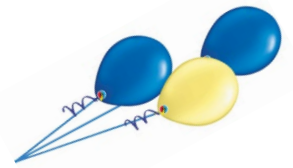


Yasha's Best Combinations



M. Illescas Cordoba – J. Murey

Holon 1986



S. Krasnov – J. Murey

Moscow 1966



J. Murey – A. Nikitin

Moscow 1971



J. Murey – V. Malakhov

Cappelle-la-Grande 2000



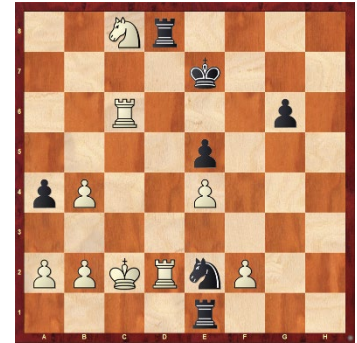
J. Emms – J. Murey

Lloyds Bank Open, London 1983



V. Liberzon – J. Murey

Be'er Sheva 1978



Yasha's Brilliant Opening Ideas

Petrov's Defence



1. e4 e5 2. Nf3 Nf6
3. d4 Nxe4 4. Bd3 **Nc6!**

A great novelty that was played vs. Jan Timman in 1993.

Alekhine's Defence



1. e4 Nf6 2. e5 Nd5 3. c4 Nb6 4. d4 d6 5. f4 dxe5 6. fxe5 Nc6 7. Nf3 Bg4 8. **c5!** Bxf3?! (8... Nd5) 9. Qxf3 Nxd4 10. Qd3! Nc8 11. Be3

And black has serious issues with space and development.